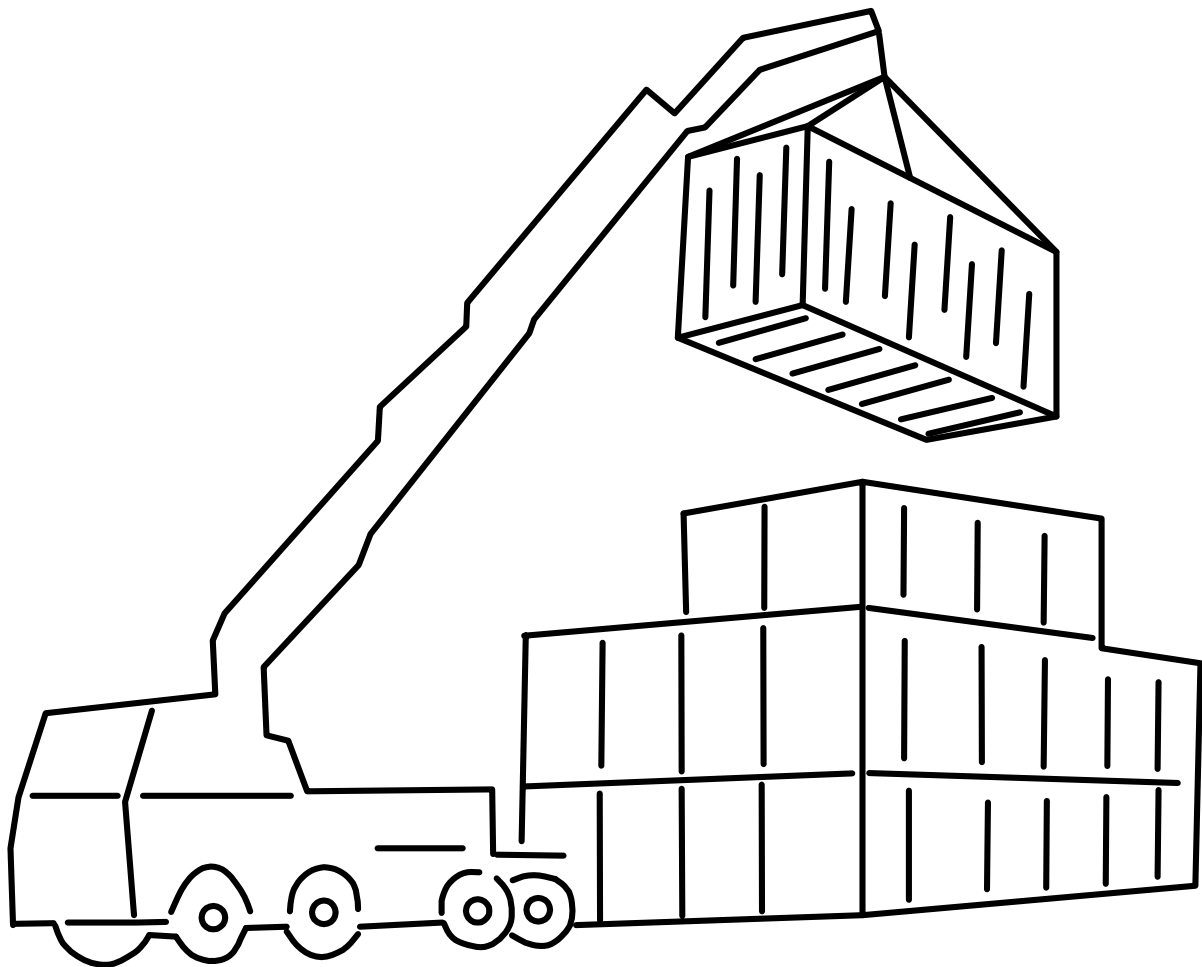


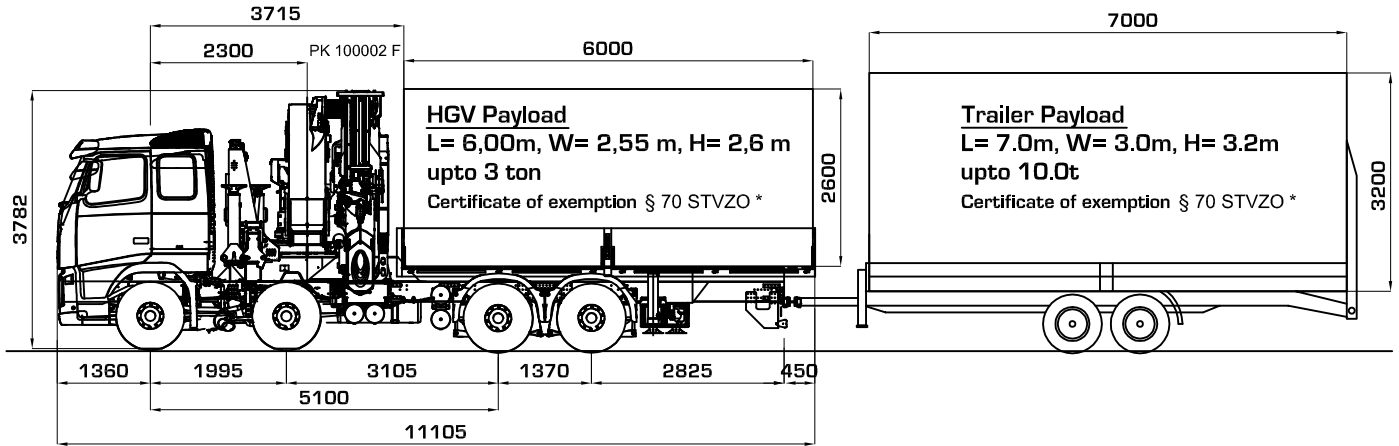
## Technical Description

# HGV-Cranes

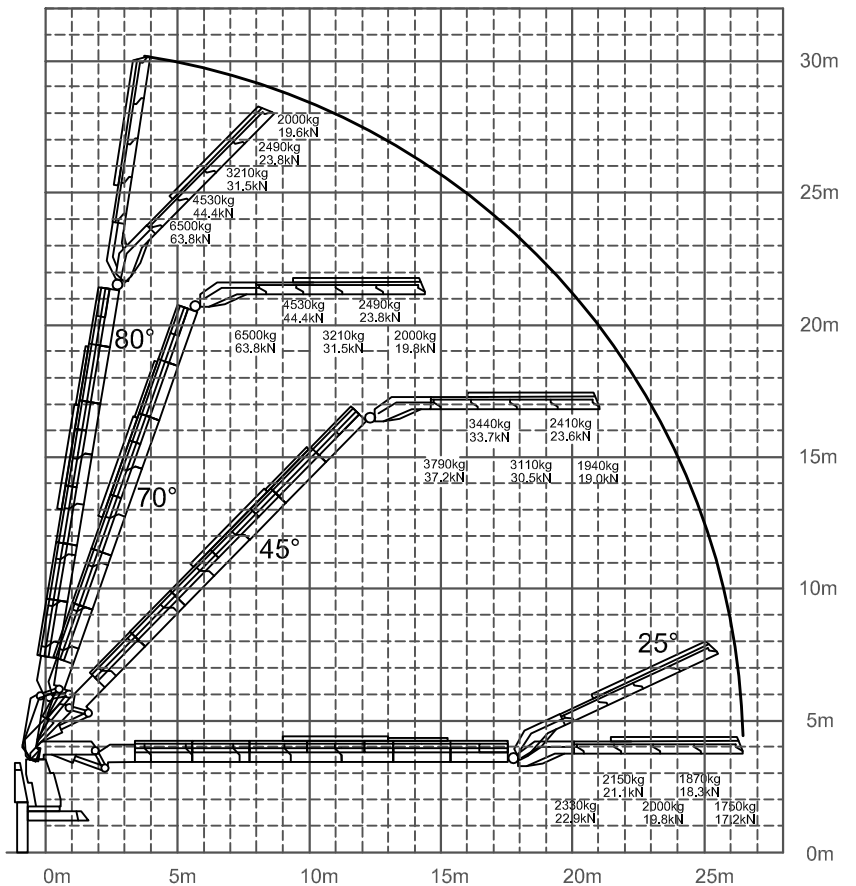


# PK 100002 F mounted on a Volvo FH16 660

for heavy duty purposes, height 30m, max. lifting moment 28m/277.6kNm

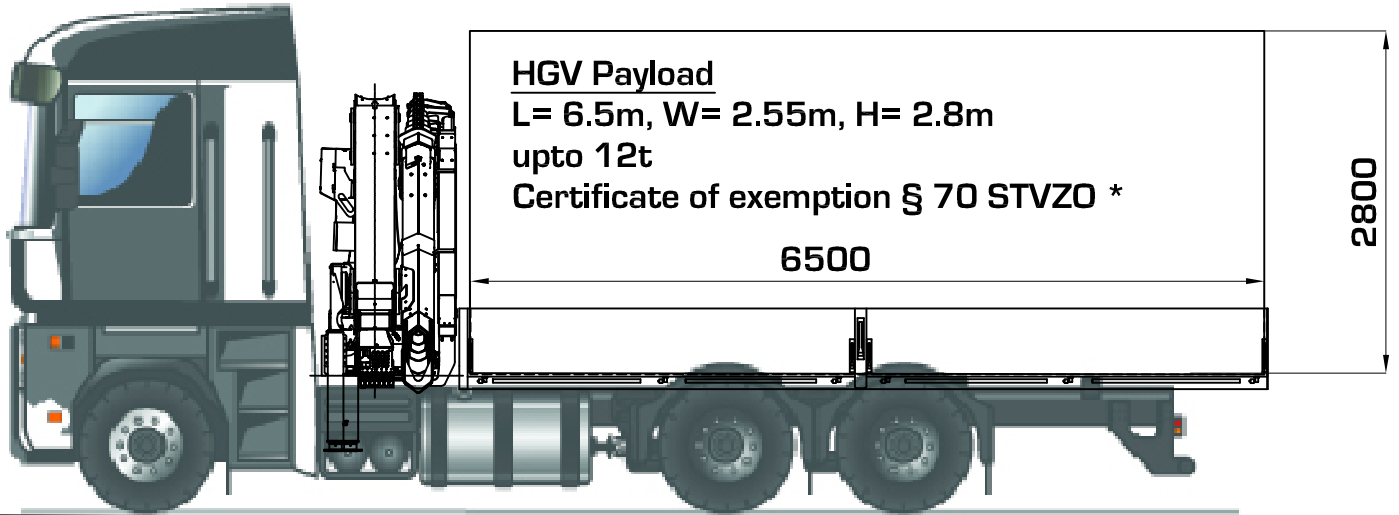


## Load bearing diagram PK 100002 on PJ 170C

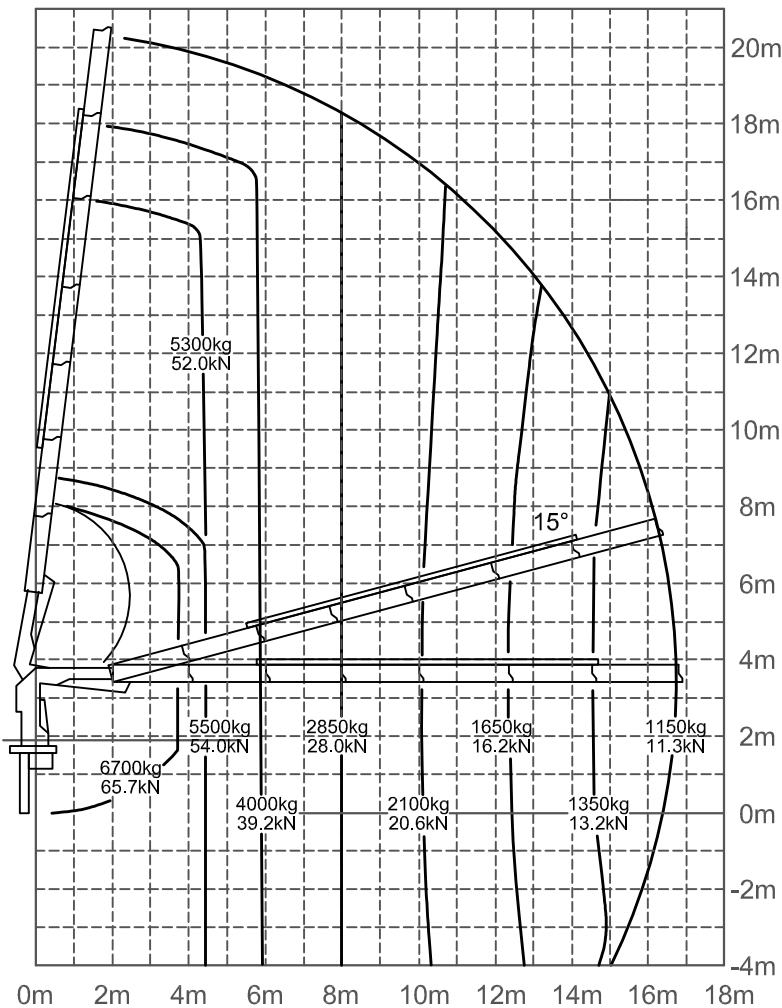


Classification: H1/B3 according to DIN 15018

# PK 29002 with 6 hydraulic extensions mounted on a Renault AE 400



## Load bearing diagram PK 29002



Classification: H1/B3 according to DIN 15018

